



**International  
Section**

# 2024 Seoul Global Conference

*“Cross Border Litigation and Transactions  
under a New Legal Paradigm”*

 **October 16 - 18, 2024**

 **Hanyang University – HIT Building  
Seoul, South Korea**



# NEW YORK STATE BAR ASSOCIATION INTERNATIONAL SECTION

## Who are we?

### New York State Bar Association and the International Section

The New York State Bar Association (NYSBA) is the largest voluntary state bar organization in the United States. NYSBA's International Section has over 1,500 members and chapters in more than 70 countries around the world. The International Section brings members together to learn from one another, advocate for the rule of law, and contribute to the development of a truly international legal community.

## What is the Global Conference?

Each year, NYSBA's International Section hosts a conference in a different city outside of the United States to provide American and foreign colleagues the opportunity to meet, network, and expand their international practices. Our most recent conferences have been held in Mexico City, London, New York City, Tokyo, Montréal, Antigua, Guatemala, Paris, São Paulo, Vienna, Hanoi, Lisbon, Panama, Sydney, and the list goes on!

This year, the conference will consist of three days of Continuing Legal Education (CLE) panels and plenaries, including various hot topics in international law. The meeting also offers networking opportunities in the form of extended breaks, luncheons, receptions, dinners, including our traditional gala dinner, and social and cultural events.

## Steering Committee

### International Section Chair:

Carlos Ramos-Mrosovsky, BakerHostetler LLP, New York, U.S.A.

### Conference Co-Chairs:

Hyun Suk Choi, Choi & Park LLC, New York, U.S.A.

Neil Quartaro, Cozen O'Connor, New York, U.S.A.

Torsten Kracht, Hunton Andrews Kurth LLP, Washington, D.C., U.S.A.

Tsugumichi Watanabe, TMI Associates, Tokyo, Japan

### Steering Committee Members (New York and International):

André Durocher, Fasken Martineau DuMoulin LLP, Canada

Azusa Saito, Nishimura & Asahi NY LLP, New York, U.S.A.

Eduardo Ramos-Gomez, Duane Morris LLP, Singapore

Gina (Ya-hsin) Hung, Realtek Semiconductor Corp, Taiwan

Gonzalo S. Zeballos, BakerHostetler LLP, New York, U.S.A.

Howard A. Fischer, Moses & Singer LLP, New York, U.S.A.

Jia (Jessica) Fei, King & Wood Mallesons, Beijing, China

Jian Wu, Kobre & Kim, Shanghai, China

John Frangos, Tilleke & Gibbins, Bangkok, Thailand

Lor Sok, Sok Xing & Hwang, Cambodia

Nguyen Hong Hai, Lexcomm Vietnam LLC, Vietnam

Richard Gelski, Johnson Winter Slattery, Australia

Rico V. Domingo, Domingo & Associates, Philippines

Sean La'Brooy, Vita Law LLC, Singapore

Sherry Levin Wallach, The Legal Aid Society, New York, U.S.A.

Timothy D. Castle, St James Hall Chambers, Australia

### Steering Committee Members (South Korea):

Chayeun Ha, Executive, Seoul Bar Association

Cheol Jeong, Jipyong LLC

Dong Ryul (Derek) Lee, Shin & Kim LLC

Hae Kyung (Helen) Lee, National Assembly Research Service

Hojun Yeom, Bae Kim & Lee LLC

Hyeijin (Kelly) Park

Jiseong Jeon, Digital Asset

Joo Heon Lee, Kim & Chang

Kathleen E. Kim, Hongik University

Kyeong (Catherine) Kim, DR & AJU LLC

Shinjae Yoo, Digital Asset

Soo Hyung Lee, The Law Times

Soo-Jeong Ahn, Yulchon

Suyong Min, Kim & Chang

# IMPORTANT INFORMATION

## Up to 14.5 NY MCLE Credits

This program is transitional and approved for MCLE credit in New York for all attorneys, including those newly admitted.

The New York State Bar Association has been certified by the New York State Continuing Legal Education Board as an accredited provider of continuing legal education in the State of New York. For more information about the CLE Rules, visit [NYCOURTS.GOV/ATTORNEYS/CLE](http://NYCOURTS.GOV/ATTORNEYS/CLE).

### Discounts and Scholarships

New York State Bar Association (“NYSBA”) members and non-members may receive financial aid to attend this program. Under this policy, anyone who requires financial aid may apply in writing, not later than 20 working days prior to the start of the program, explaining the basis of his/her hardship, and if approved, can receive a discount or scholarship, depending on the circumstances. To apply, fill out the tuition assistance application form at [www.nysba.org/TuitionAssistanceForm/](http://www.nysba.org/TuitionAssistanceForm/) and send your request to Holly Hirsch at: New York State Bar Association, One Elk Street, Albany, New York 12207, or [hirsch@nysba.org](mailto:hirsch@nysba.org). Scholarships are for the CLE portion of the program only and not evening and social functions.

### Accommodations for Persons with Disabilities

NYSBA will make reasonable modifications/accommodations to allow participation in its services, programs, or activities by persons with disabilities. NYSBA will provide auxiliary aids and services upon request. NYSBA will remove architectural barriers and communication barriers that are structural in nature where readily achievable. To request auxiliary aids or services or if you have any questions regarding accessibility, please contact Carra Forgea at [cforgea@nysba.org](mailto:cforgea@nysba.org) or 1-518-487-5521.

### Dress Code

- Conference Panels, Plenaries and Lunches: Business Attire or Business Casual
- Wednesday and Thursday Receptions: Business Attire or Business Casual
- Friday Gala Reception and Dinner: Business Attire or Semi-Formal (ex. cocktail dresses and suits are appropriate)

### Account and Registration Assistance

For account and registration assistance, we invite you to reach out to our Member Resource Center (MRC) at [mrc@nysba.org](mailto:mrc@nysba.org) or at 800-582-2452 / +1 (518) 463-3724.

## ACCESSING THE ONLINE ELECTRONIC COURSE MATERIALS

To view the online course materials including the course agenda, PowerPoint slides, and speaker biographies, please log into the NYSBA website [www.nysba.org](http://www.nysba.org) and access your My Learning Dashboard.

1. Log-in to the NYSBA website.
2. Hover over the link labeled “Hi, (First Name)” on the top right side of the screen.
3. Click “My Learning Dashboard” under “Hi (First Name)”.
4. Locate webinar under “My Programs” tab.
5. Click the blue box labeled “Materials” to view the course materials.

# ACCOMMODATION

## JW MARRIOTT DONGDAEMUN SQUARE SEOUL

Address: 279, Cheongyecheon-ro, Jongno-gu, Seoul, South Korea, 03198



Booking link: [Book your group rate for NYSBA Global Conference 2024](#)

### Important Information

- You can make a reservation individually through the link above.
- Please note that the card information provided at this link is for guarantee purposes only, and the actual payment will be made at check-in.
- Non-cancellable
- **Cut-off date: Saturday, September 21, 2024**
- Rates:

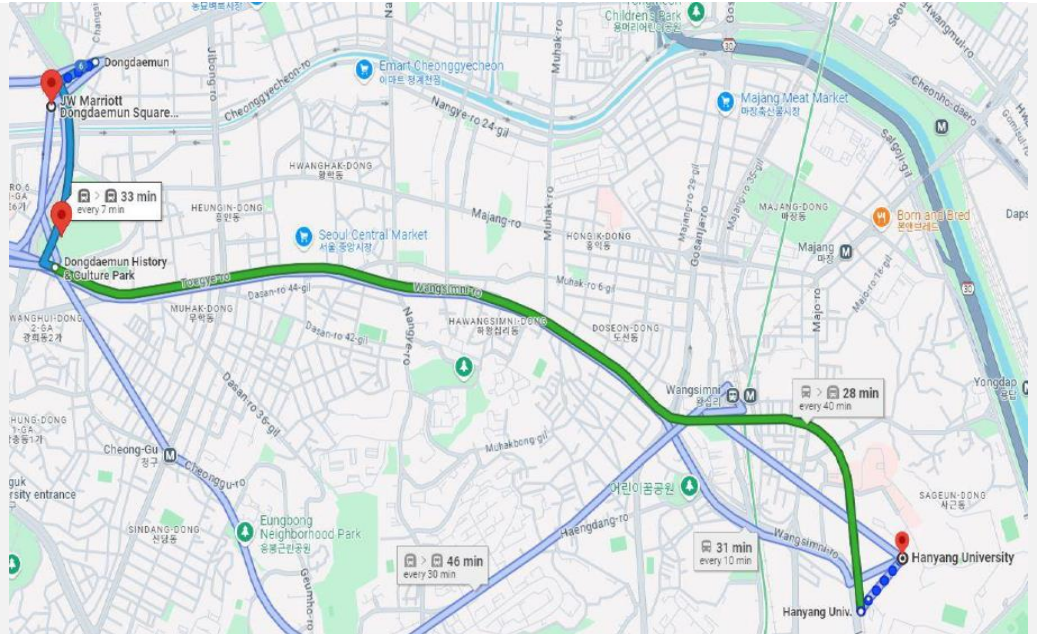
DATE	RATE WITHOUT BREAKFAST (TAX INCLUDED)	WITH BREAKFAST
Tuesday, October 15, 2024	399,300 Korean won	Add 36,300 Korean won
Wednesday, October 16, 2024	399,300 Korean won	Add 36,300 Korean won
Thursday, October 17, 2024	399,300 Korean won	Add 36,300 Korean won
Friday, October 18, 2024	399,300 Korean won	Add 36,300 Korean won
Saturday, October 19, 2024	411,400 Korean won	Add 36,300 Korean won



# HOW TO GET FROM THE JW MARRIOTT HOTEL TO HANYANG UNIVERSITY

## OPTION 1

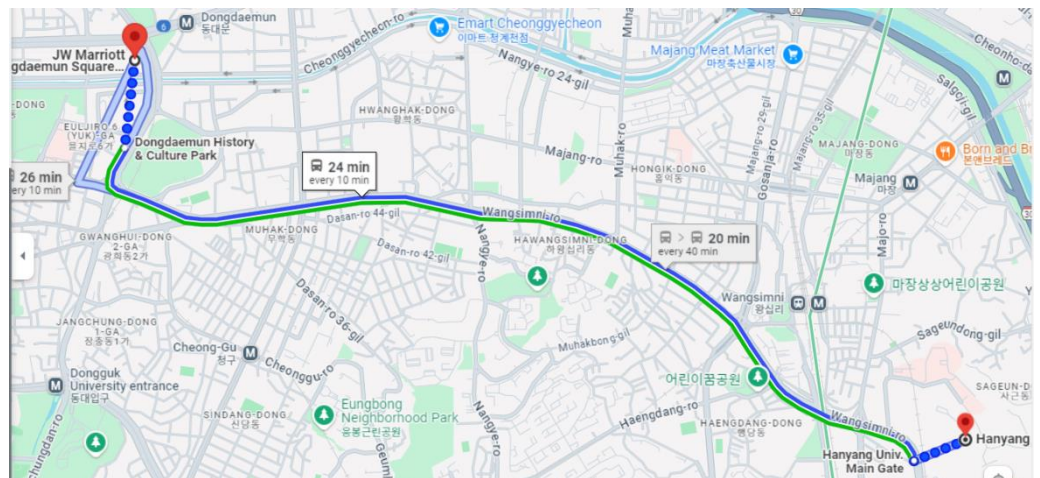
- JW Marriott Dongdaemun Square  
Seoul  
279 Cheonggyecheon-ro, Jongno District, Seoul
- Walk  
▼ About 9 min, 250 m
- Dongdaemun  
4호선 433  
▼ 2 min (non-stop) · platform 오이도
- Dongdaemun History & Culture ...  
Go to Dongdaemun History & Culture Park  
▼ About 1 min
- Dongdaemun History & Culture ...  
2호선 234  
▼ 7 min (4 stops) · Platform 내선순환
- Hanyang Univ.  
Walk  
▼ About 7 min, 230 m
- Hanyang University  
222 Wangsimni-ro, Seongdong-gu, Seoul



1. Walk 5 minutes to the Dongdaemun subway station
  - Note: The entrance to the SBC (Seoul Baking Company) store, located on the LL floor of the hotel, is directly connected to the subway station. It takes a 5-minute walk to subway lines 1 and 4.
2. Take subway line number 4
3. Get off at Dongdaemun History & Culture Park (DDP)
4. Transfer to subway line number 2
5. Get off at Hanyang University Station.
6. Walk to the HIT Building #707 (see campus map on next page)

## OPTION 2

- JW Marriott Dongdaemun Square  
Seoul  
279 Cheonggyecheon-ro, Jongno District, Seoul
- Walk  
▼ About 9 min, 550 m
- Dongdaemun History & Culture P...  
2호선 211  
▲ 7 min (4 stops) · Platform 내선순환
- Sindang
- Sangwangsimni
- Wangsimni Station  
Service run by Seoul Metro
- Hanyang Univ.  
Walk  
▼ About 3 min, 230 m
- Hanyang University  
222 Wangsimni-ro, Seongdong-gu, Seoul



1. Walk 9 minutes from JW Marriot Dongdaemun Square Seoul hotel to Dongdaemun History & Culture Park (DDP) Station.
2. Take Subway Line Number 2 at DDP Station.
3. Get off at Hanyang University Station
4. Walk 3 minutes from the station to Hanyang University

# CONFERENCE VENUE

## HIT (Hanyang Institute of Technology), Hanyang University

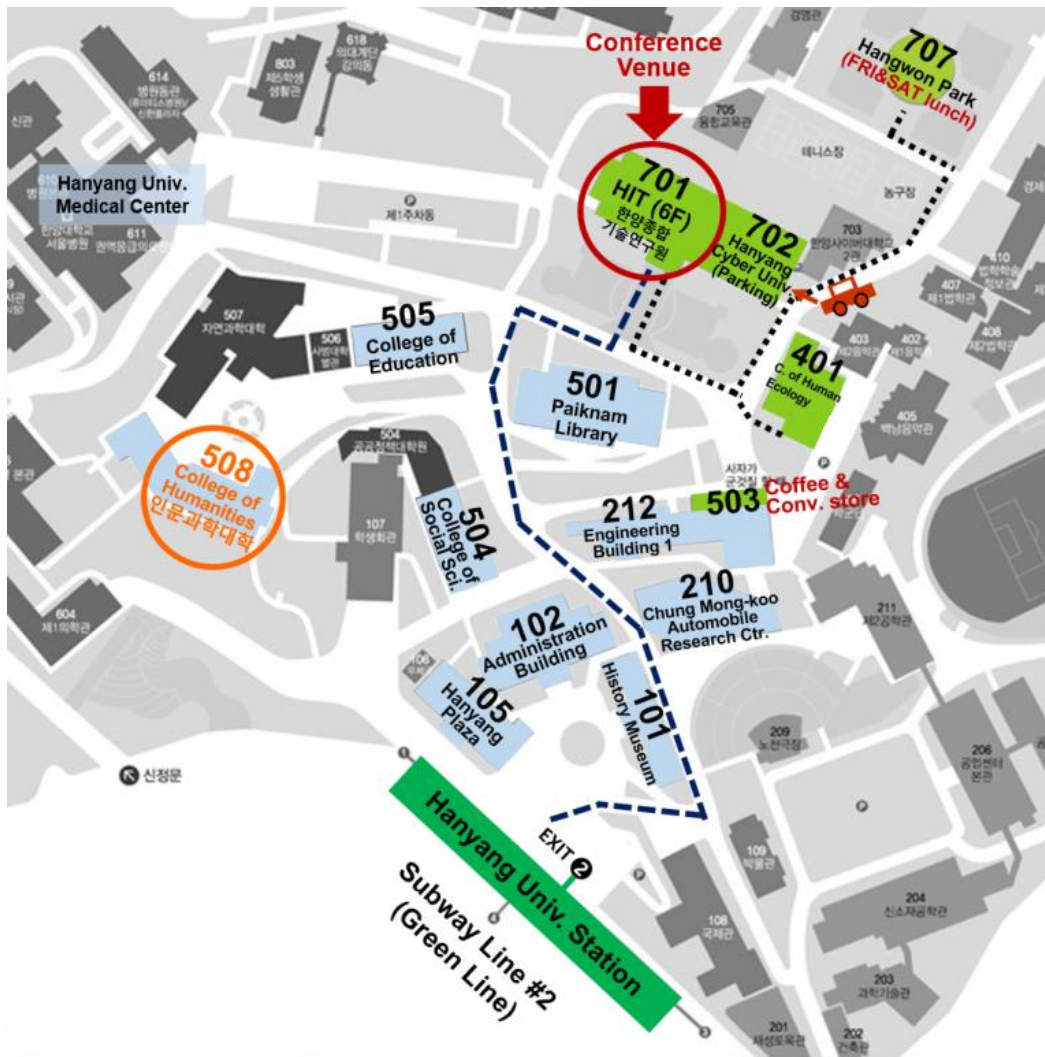
HIT (Building 701), 222, Wangsimni-ro, Seongdong-gu, Seoul, South Korea 04764



Hanyang University is a private research university in South Korea. The main campus is in Seoul, and the second one, the Education Research Industry Cluster at Ansan, or ERICA campus, is located in Ansan. Hanyang (한양;漢) derives from the former name of the capital Seoul which was used during the Chosun Dynasty.

Hanyang University has an alumni network of 330,000 that is not limited to the field of engineering but also to other fields. In 2018, Hanyang was ranked 1st for the number of CEO alumni of venture companies. In 2019, QS World University Rankings ranked Hanyang University 150th.

The university welcomes over 7,400 foreign students each year and more than 3,000 students study abroad annually. HYU counts the Massachusetts Institute of Technology, University of Cambridge, and Tsinghua University among its 820 partner universities in 88 countries.



Note: The easiest way to locate yourself on campus is to find building numbers around you. Every building has its own building number written on the outside wall.

## SOCIAL EVENTS



### WELCOME RECEPTION

Date: Wednesday, October 16, 2024

Time: 5:00 p.m. – 7:00 p.m.

Venue: HIT (Building 701), Hanyang University, Seoul

Address: HIT, 222, Wangsimni-ro, Seongdong-gu, Seoul, South Korea 04764



### COCKTAIL RECEPTION

Date: Thursday, October 17, 2024

Time: 5:30 p.m. – 7:30 p.m.

Venue: The Griffin at JW Marriott Dongdaemun Square

Address: 279, Cheonggyecheon-ro, Jongno-gu, Seoul, South Korea 03198



### K-FOOD WALKING TOUR TO KWANGJANG MARKET

Date: Thursday, October 17, 2024

Time: 7:30 p.m. – 9:30 p.m.

Venue: Kwangjang Market

88 Changgyeonggung-ro, Jongno District, Seoul, South Korea



### GALA RECEPTION AND DINNER

Date: Friday, October 18, 2024

Venue: Floating Island Convention (FIC)

Address: Floating Island Convention, 1F Some Sevit, 650, Banpo-dong, Secho-gu, Seoul, Korea

Timing:

6:00 p.m. – 7:00 p.m. Reception

7:00 p.m. – 9:30 p.m. Seated Dinner

## DISTINGUISHED SPEAKERS



**Judge Jennifer Choe-Groves**  
U.S. Court of International Trade  
New York, U.S.A.  
*(Keynote Speaker)*



**Judge Sidney H. Stein**  
U.S. District Court  
Southern District of New York, U.S.A.



**Judge Sallie Kim**  
U.S. District Court  
Northern District of California  
San Francisco, CA



**Commissioner Hester M. Peirce**  
U.S. Securities and Exchange Commission  
*(Virtual Appearance)*

## AGENDA

### International Section 2024 Global Conference in Seoul

New York State Bar Association

Wednesday, October 16 to Friday, October 18, 2024  
HIT (Hanyang Institute of Technology), Hanyang University  
HIT, 222, Wangsimni-ro, Seongdong-gu, Seoul, South Korea 04764

### PRE-CONFERENCE – TUESDAY, OCTOBER 15, 2024

6:00 p.m.- 8:30 p.m. **VIP Dinner hosted by the President of Hanyang University *(by invitation only)***  
Address: Hanyang University, Seoul, South Korea

### DAY 1 – WEDNESDAY, OCTOBER 16, 2024

<b>7:45 a.m.</b>	<b>Bus departing from JW Marriott Dongdaemun Square to Hanyang University</b> <i>(Space is limited to 45 seats. Please see the previous pages for subway instructions.)</i>
<b>8:30 a.m.–5:00 p.m.</b>	<b>Registration and Exhibits</b>   Lobby, 6 <sup>th</sup> Floor
<b>8:30 a.m.- 9:00 a.m.</b>	<b>Morning Coffee</b>   Lobby, 6 <sup>th</sup> Floor <i>(Sponsored by Jipyong)</i>
<b>9:00 a.m.–9:30 a.m.</b>	<b>Welcome Remarks</b>   Big Conference Room, 6 <sup>th</sup> Floor  Justice Tae-Ak Roh, Supreme Court of Korea Judge Sidney H. Stein, United States District Court, Southern District of New York, U.S.A. Hyung-nam Park, President, Judicial Policy Research Institute Sherry Levin Wallach, President Emeritus, New York State Bar Association Carlos Ramos-Mrosovsky, International Section Chair, New York State Bar Association



9:30 a.m.–10:30 a.m. **PLENARY 1 | Big Conference Room, 6<sup>th</sup> Floor**

### Judicial Plenary

It has often been said that if you lose the court, you lose the case. This judicial plenary brings together experienced jurists from different jurisdictions, including the United States and Korea, to discuss how to embrace the new developments in the practice of law and the ethical aspects of practice before the courts. Court presentation and demeanor along with effective and ethical brief writing practices will be explored and discussed, as will the tips and tricks that can assist counsel in making arguments that will be well received by the court.

**Keynote Speaker:** Judge Jennifer Choe-Groves, United States Court of International Trade, New York, NY, U.S.A.

#### Speakers:

Justice Tae-Ak Roh, Supreme Court of Korea

Judge Sidney H. Stein, United States District Court, Southern District of New York, U.S.A.

Judge Sallie Kim, U.S. District Court, Northern District of California, U.S.A.

#### Co-Chairs and Moderators:

Neil Quartaro, Cozen O'Connor, New York, U.S.A

Hyun Suk Choi, Choi & Park, LLC, New York, U.S.A.

*0.5 CLE Credit in Ethics*

*0.5 CLE Credit in Skills*

10:30 a.m.–10:45 a.m. Break

10:45 a.m.–11:45 a.m. **Panels 1 to 3**

Track 1	Track 2	Track 3
<p><b>PANEL 1   Room 310 (3rd floor)</b></p> <p><b>Bridging Borders: Challenges and Innovations in Cross-Border Enforcement of Foreign Judgments in South Korea, China, and the U.S.</b></p> <p>The globalization of commerce and international relations has led to an increase in cross-border litigation, making the enforcement of foreign judgments a critical issue for legal systems worldwide. This panel will bring together distinguished judges from South Korea, China and the United States to explore the complexities, challenges, and innovative solutions in the enforcement of foreign judgments across different legal landscapes.</p> <p><b>Co-Chairs:</b> Hyun Suk Choi, Choi &amp; Park, LLC, New York, NY, U.S.A.</p>	<p><b>PANEL 2   Room 615 (6<sup>th</sup> floor)</b></p> <p><b>Arbitrating your International (Re)Insurance Dispute: A Comparative Study Between Asia-Pacific and the US</b></p> <p>Many international insurance and reinsurance contracts contain clauses for disputes to be resolved through arbitration. This panel discusses how the arbitration clauses facilitate the resolution of such disputes in Asia-Pacific and the USA. Specifically, on the similarities and differences of the arbitral regimes in these two regions, with a view towards observing what works and what could stand to improve in each region. We look forward to active audience participation.</p> <p><b>Panelists:</b></p>	<p><b>PANEL 3   Room 613 (6<sup>th</sup> floor)</b></p> <p><b>Cross-Border Litigation, Enforcement &amp; Defense Strategies in Europe, Asia &amp; the United States</b></p> <p>Panelists of leading judges, practitioners and in-house counsel will discuss latest trends and strategic considerations when initiating or facing cross-border litigation in and across multiple jurisdictions, including the UK/EU, Asia and the United States. The panel will address what to consider when choosing where to bring a global patent enforcement action, including pros and cons of various forums (including international arbitration, patent invalidation and other administrative agency proceedings, and district court) and jurisdictions, best practices for offensive and defensive discovery and witness preparation for depositions and trial, and enforcing (or contesting) judgments in other</p>

<p>Jian Wu, Kobre &amp; Kim LLP, Shanghai, China</p> <p><b>Panelists:</b>  Changhyun Lee, Bae Kim &amp; Lee, Seoul, Korea</p> <p>Gary Gao, Zhong Lun Law Firm, Shanghai, China</p> <p>Judge Chong Kun Kim, Judicial Policy Research Institute, Goyang, Korea</p> <p>Robin Baik, Kobre &amp; Kim, Seoul, Korea</p> <p>Judge Sidney H. Stein, United States District Court, Southern District of New York, U.S.A. (<i>Discussion Participant</i>)</p> <p><i>1.0 CLE Credit in Areas of Professional Practice</i></p>	<p>Alex Rosati, Willis Towers Watson PLC (now branded as WTW), Singapore</p> <p>Bami Yoo, Lee &amp; Ko, Seoul, Korea</p> <p>Marc L. Abrams, Mintz Levin Cohn Ferris Glovsky and Popeo, P.C., New York, NY, U.S.A.</p> <p>Sinyee Ong, Chua &amp; Partners LLP, Singapore</p> <p>Young Seok Lee, Rosetta Legal, Seoul, Korea</p> <p><i>1.0 CLE Credit in Areas of Professional Practice</i></p>	<p>jurisdictions. The panel will also address recent developments at the Unified Patent Court (UPC), the Korean Intellectual Property Trial and Appeal Board (IPTAB) and U.S. Patent Trial and Appeal Board (PTAB), the U.S. International Trade Commission (ITC), and other forums. The panel will also discuss the growing proliferation of Non-Practicing Entity (NPE) litigation in European and U.S. courts.</p> <p><b>Chair:</b>  Naveen Modi, Paul Hastings LLP, Palo Alto, CA</p> <p><b>Co-Moderators:</b>  Lisa K. Nguyen, Paul Hastings LLP, Palo Alto, CA</p> <p>Rudy Y. Kim, Paul Hastings LLP, Palo Alto, CA</p> <p><b>Panelists:</b>  Judge Sallie Kim, U.S. District Court, Northern District of California, U.S.A.</p> <p>Judge Young Gi Kim, IP High Court of Korea, Daejeon, Korea</p> <p>Jason Raeburn, Paul Hastings LLP, London, UK</p> <p><i>1.0 CLE Credit in Areas of Professional Practice</i></p>
11:45 a.m. – 12:00 p.m.	Break	
<b>12:00 p.m.-1:00 p.m. Panels 4 to 6</b>		
<p align="center"><b>Track 1</b></p> <p><b>PANEL 4   Room 310, 3<sup>rd</sup> floor</b></p> <p><b>How to Successfully Navigate Cross-Border Disputes</b></p> <p>Targeting Korean companies involved in cross-border disputes (US litigation and international arbitration), the panel will discuss key cutting-edge issues in discovery, document production, privilege and enforcement of court judgment/arbitral award (including potentially third-party funding and asset search) to assist Korean companies to be better prepared for</p>	<p align="center"><b>Track 2</b></p> <p><b>PANEL 5   Room 615 (6<sup>th</sup> floor)</b></p> <p><b>The Transformation of Dispute Resolution in the Asia-Pacific Region: Changes &amp; Challenges Part 1</b></p> <p>The rapid changes in technology in recent years have transformed the world economy, and led to similar changes in the international landscape of dispute resolution. Key issues including the challenges of enforcement of foreign awards or judgments, are covered in a Part 1 and Part 2 panel format, on arbitration, international litigation and mediation. Practitioners will provide perspectives</p>	<p align="center"><b>Track 3</b></p> <p><b>PANEL 6   Room 613 (6<sup>th</sup> floor)</b></p> <p><b>Current Trends in M&amp;A litigation: An International Perspective</b></p> <p>Panelists will address current trends and hot topics on disputes related to mergers and acquisitions in their respective jurisdictions and in cross border proceedings aiming to compare how the same legal issues – such as breaches of representations and warranties, break-up fees, earn-outs, shareholders’ rights – are addressed under their legal systems. The proposed panel is deeply related to two of the areas that will be covered during</p>

disputes in the US and to successfully enforce their claims.

**Moderator:**

Sae Youn Kim, Kim & Chang, Seoul, Korea

**Panelists:**

Matthew J. Christensen, Kim & Chang, Seoul, Korea

Stephen Cha-Kim, Arnold & Porter, New York, NY, U.S.A.

Michael J. Mueller, Hunton Andrews Kurth LLP, Washington D.C., U.S.A.

Tae Hun Lee, LITIG Equity Partners

*1.0 CLE Credit in Areas of Professional Practice*

in jurisdictions covering the United States, Korea, Australia, Singapore, Thailand, Vietnam and Cambodia.

**Co-Chairs:**

Eduardo Ramos-Gomez, Duane Morris, Singapore

Sean La’Brooy, Vita Law LLC, Singapore

**Panelists:**

Andrew Chongseh Kim, Bae Kim & Lee LLC, Korea

Bunnarith An, An & Lor, Phnom Penh, Cambodia

Donna Ross LLM FCI Arb, Donna Ross Dispute Resolution, Singapore

John Frangos, Tilleke & Gibbins, Bangkok, Thailand

Neil Quartaro, Cozen O’Connor, New York, U.S.A

Nguyen Hong Hai, Lexcomm Vietnam LLC, Hanoi, Vietnam

*1.0 CLE Credit in Areas of Professional Practice*

the Seoul Global Conference: cross-border litigation and cross-border transactions.

**Panelists:**

Chris Semerjian, Fasken Martineau DuMoulin LLP, Montreal, Canada

Ítalo G. Martins, Mannheimer, Perez e Lyra, São Paulo, Brazil

Jinhee Kim, Jipyong LLC, Seoul, Korea

*1.0 CLE Credit in Areas of Professional Practice*

1:00 p.m.–2:30 p.m.

Lunch | Dining Hall, 6<sup>th</sup> Floor

**2:30 p.m.-3:30 p.m.**

**Panels 7 to 9**

**Track 1**

**Track 2**

**Track 3**

**PANEL 7 | Room 310, 3<sup>rd</sup> floor**

**PANEL 8 | Room 615 (6<sup>th</sup> floor)**

**PANEL 9 | Room 613 (6<sup>th</sup> floor)**

**Cross-Border Litigation for U.S. and Korean Businesses and Practical Tips**

We will discuss the unfamiliar litigation landscape that U.S. and other foreign companies may encounter in Korea, as well as the challenges faced by Korean companies operating overseas in jurisdictions such as the U.S., Singapore, Hong Kong, the British Virgin Islands, and the Cayman Islands. Topics will include (i) pre-litigation strategies such as jurisdiction and forum selection, and choice of law issues; (ii) discovery and evidence gathering issues; and (iii) judgement recognition and enforcement issues, which may be

**The Transformation of Dispute Resolution in the Asia-Pacific Region: Changes & Challenges Part 2**

The session continues with panelists providing practical insights into the United States, Korea, Australia, Singapore, Thailand, Vietnam and Cambodia on issues such as evidence gathering, to help foreign investors and international lawyers navigate the dispute resolution landscape in these jurisdictions.

**Co-Chairs:**

Eduardo Ramos-Gomez, Duane Morris, Singapore

Sean La’Brooy, Vita Law LLC, Singapore

<p>similar or different in the jurisdictions mentioned.</p> <p><b>Moderator:</b> Oommen Mathew PBM, Omni Law LLC, Singapore</p> <p><b>Panelists:</b> Bianca Lin, Allegaert Berger &amp; Vogel LLP, New York, NY, U.S.A. Kate Lan, Carey Olsen, Singapore Kyeong (Catherine) Kim, DR &amp; AJU LLC, Seoul, Korea Hyung Kun (Matthew) Kwon, Ashurst, Seoul, Korea Moses Park, Liberty Chambers, Hong Kong</p> <p><i>1.0 CLE Credit in Areas of Professional Practice</i></p>		<p><b>Panelists:</b> Andrew Chongseh Kim, Bae Kim &amp; Lee LLC, Korea Bunnarith An, An &amp; Lor, Phnom Penh, Cambodia Donna Ross LLM FCI Arb, Donna Ross Dispute Resolution, Singapore John Frangos, Tilleke &amp; Gibbins, Bangkok, Thailand Neil Quartaro, Cozen O'Connor, New York, U.S.A. Nguyen Hong Hai, Lexcomm Vietnam LLC, Hanoi, Vietnam</p> <p><i>1.0 CLE Credit in Areas of Professional Practice</i></p>
--	--	---

3:30 p.m.-3:45 p.m.      Afternoon Coffee Break | Lobby, 6<sup>th</sup> Floor

**3:45 p.m.-4:45 p.m.      Panels 10 to 12**

Track 1	Track 2	Track 3
<p><b>PANEL 10   Room 310, 3<sup>rd</sup> floor</b></p> <p><b>A Comparative Approach to Employment Litigation and Best Practices for Employers</b></p> <p>This panel will review and discuss recent litigation trends in employment litigation across Korea and U.S. jurisdictions with an emphasis on best practices for mitigating employer exposure.</p> <p><b>Moderator:</b> DL Morriss, Hinshaw &amp; Culbertson LLP, New York and Illinois, U.S.A.</p> <p><b>Panelists:</b> Jason J. Kim, Hinshaw &amp; Culbertson LLP, Los Angeles, CA, U.S.A. Jungwoo Lee, Yulchon LLC, Seoul, Korea Paul Cho, Kim &amp; Chang, Seoul, Korea</p>	<p><b>PANEL 11   Room 615 (6<sup>th</sup> floor)</b></p> <p><b>Korea and Investor-State Disputes</b></p> <p>Investor-State arbitration is a controversial and highly relevant area of the law for international practitioners of all types. In recent years, Korea has found itself defending several claims by foreign investors, while at the same time Korean investors rely on this form of dispute resolution to protect their investments around the world. This panel will discuss various aspects of both investor-State claims against the Republic of Korea and claims by Korean investors abroad, including, among other topics, enforcement issues and recent developments in Korea's investment treaty practice.</p> <p><b>Co-Chairs:</b> Carlos Ramos-Mrosovsky, BakerHostetler LLP, New York, NY, U.S.A. Lexi Menish, Vanderbilt Law School and Menish Arbitration LLC, Nashville, TN, U.S.A.</p>	<p><b>PANEL 12   Room 613 (6<sup>th</sup> floor)</b></p> <p><b>Current Trends in the Antitrust Enforcement and Litigation</b></p> <p>Description: TBD</p> <p><b>Panelists:</b> Torsten M. Kracht, Hunton Andrews Kurth LLP, New York, NY, U.S.A. Judge June Young Chung, Seoul High Court, Seoul, Korea Derek Dongryul Lee, Shin &amp; Kim LLC, Seoul, Korea Sally Qin, BakerHostetler LLP, Washington, D.C., U.S.A.</p> <p><i>1.0 CLE Credit in Areas of Professional Practice</i></p>

1.0 CLE Credit in Areas of Professional Practice	<p><b>Co- Moderators:</b> Kyongwha Chung, Covington &amp; Burling LLP, New York, NY, U.S.A.</p> <p>Saemee Kim, Lee &amp; Ko, Seoul, Korea</p> <p><b>Panelists:</b> Beomsu Kim, Baker McKenzie, Seoul, Korea</p> <p>Hyungkeun Lee, Kim &amp; Chang, Seoul, Korea</p> <p>Samantha Tan, Freshfields, Singapore</p> <p>1.0 CLE Credit in Areas of Professional Practice</p>	
4:45 p.m.	End of program	
5:00 p.m.-7:00 p.m.	<p><b>Welcome Reception   HIT Building, Hanyang University, Seoul</b> Address: HIT, 222, Wangsimni-ro, Seongdong-gu, Seoul, South Korea 04764 Room: 24 Seasons, 6<sup>th</sup> Floor <i>Entertainment is sponsored by White &amp; Case LLP</i></p>	

## DAY 2 - THURSDAY, OCTOBER 17, 2024

7:45 a.m.	<p><b>Bus departing from JW Marriott Dongdaemun Square to Hanyang University</b> (Space is limited to 45 seats. Please see the previous pages for subway instructions.)</p>		
8:30 a.m.–5:00 p.m.	<p><b>Registration and Exhibits   Lobby, 6<sup>th</sup> Floor</b></p>		
8:30 a.m.-9:00 a.m.	<p>Morning Coffee   Lobby, 6<sup>th</sup> Floor</p>		
9:00 a.m.-10:00 a.m.	<p><b>Panels 13 to 15</b></p>		
	<b>Track 1</b>	<b>Track 2</b>	<b>Track 3</b>
<p><b>PANEL 13   Room 310 (3rd floor)</b></p> <p><b>The Future of ESG</b></p> <p>This panel discussion will explore the evolving global landscape of Environmental, Social, and Governance (ESG) and regulatory challenges faced by various jurisdictions. By examining key cases from Korea, the United States, Japan, and China, the panel will delve into the complexities of ESG implementation, the potential for the diverging regulatory approaches across different regions,</p>	<p><b>PANEL 14   Room 615 (6<sup>th</sup> floor)</b></p> <p><b>The Rise of Global Wire Fraud Claims and Financial Institution Liability</b></p> <p>This panel will explore a growing international trend of litigation against financial institutions for wire fraud, including a discussion of, People of the State of New York v. Citibank, N.A. (1:24 cv 659), regarding the NY Attorney General suit against Citibank for alleged failure to reimburse customers victimized by such practices and other international cases.</p> <p><b>Moderators:</b></p>		<p><b>PANEL 15   Room 613 (6<sup>th</sup> floor)</b></p> <p><b>Korea’s Engagement of the World through Foreign Investment: Insights and Legal Perspectives</b></p> <p>South Korea has been steadily increasing its investments around the world. The panel will be led by a presentation from Mr Hoon Choi, former Ambassador of the Republic of Korea to Singapore. Insights will be provided on key Korean regulatory developments which support and promote overseas investments, and the speakers will also highlight key legislation and legal points covering the</p>

<p>greenwashing, human rights supply chain due diligence, etc.</p> <p><b>Moderator:</b> Hae Kyung (Helen) Lee, National Assembly Research Service, Seoul, Korea</p> <p><b>Panelists:</b> Chang Wook Min, Jipyong LLC, Seoul, Korea James Zhang, Global Law Office, Shanghai, China Kentaro Toda, TMI Associates, Tokyo, Japan Stephen Cha-Kim, Arnold &amp; Porter, New York, NY, U.S.A. Yoon Jeong Lee, Kim &amp; Chang, Seoul, Korea</p> <p><i>1.0 CLE Credit in Areas of Professional Practice</i></p>	<p>Howard A. Fischer, Moses &amp; Singer LLP, New York, NY, U.S.A. Sherry Levin Wallach, The Legal Aid Society of Westchester County, White Plains, NY, U.S.A.</p> <p><b>Panelists:</b> DL Morriss, Hinshaw &amp; Culbertson LLP, New York and Illinois, U.S.A. James J. East, Jr., BakerHostetler LLP, Washington D.C., U.S.A.</p> <p><i>1.0 CLE Credit in Areas of Professional Practice</i></p>	<p>United States, South America, Korea and Singapore.</p> <p><b>Moderator:</b> Eduardo Ramos-Gomez, Duane Morris, Singapore</p> <p><b>Panelists:</b> Hon. Choi Hoon, Former Ambassador of the Republic of Korea to Singapore Cheol Jeong, Jipyong LLC, Seoul Korea David H. Yang, LIN, Seoul, Korea Philip M. Berkowitz, Littler Mendelson P.C., New York, NY, U.S.A. Sean La'Brooy, Vita Law LLC, Singapore</p> <p><i>1.0 CLE Credit in Areas of Professional Practice</i></p>
---	--	---

10:00 a.m.–10:30 a.m. Break

10:30 a.m.-11:30 a.m. Panels 16 to 18

Track 1	Track 2	Track 3
<p><b>PANEL 16   Room 310 (3rd floor)</b></p> <p><b>The Principle of Territoriality and Cross-Border Infringement of Intellectual Property Rights: A Comparison of the Approaches in Japan, South Korea, Thailand and the U.S.</b></p> <p>Generally, the principle of territoriality is applicable in the intellectual property law realm, meaning that intellectual property rights granted in a specific country are only effective within that country and that such rights do not extend outside such country's borders. However, as the number of international transactions involving intellectual property rights increase, especially with the provision of goods and services via the internet in ways previously unimaginable, the boundaries of the areas where intellectual property rights granted in a particular country are effective have expanded and become</p>	<p><b>PANEL 17   Room 615 (6<sup>th</sup> floor)</b></p> <p><b>What to Do When Your Company or Your Client is Hacked</b></p> <p>This session will focus on the data security threat landscape in the Asia-Pacific region; the legal risks and obligations that arise in the event of a data breach involving multijurisdictional data; and best practices for an effective response.</p> <p>With our recent cases that involved clients' being hacked and protection of data privacy being more complicated, we wish to discuss some real challenges clients have faced and how they have resolved them.</p> <p><b>Moderator:</b> Timothy Dickens, DR &amp; AJU LLC, Seoul, Korea</p> <p><b>Panelists:</b></p>	<p><b>PANEL 18   Room 613 (6<sup>th</sup> floor)</b></p> <p><b>Harnessing Economic Incentives for Cross-Border Investments</b></p> <p>Businesses that invest in the United States can qualify for an impressive range of economic incentives that federal, state, and local governments in the United States offer. These incentives can significantly reduce investment costs, financing costs, and operating costs. Businesses investing in the U.S. from abroad frequently qualify for cash grants, tax abatements and tax credits, tax exemptions, infrastructure spending, land, favorable rules for write-down, utility rate incentives, and job training.</p> <p>Our panelists have secured incentives for dozens of projects, including those that exceeded \$1 billion in investment. They will share real-world examples of successful investments, practical tips, and lessons learned.</p>

<p>ambiguous. This panel aims to provide practical insights on cross-border intellectual property right infringement cases by comparing the approaches of different countries to territoriality and examining recent trends in each country.</p> <p><b>Chair:</b> Tomohiro Kuribayashi, TMI Associates, Tokyo, Japan</p> <p><b>Panelists:</b> Dong Yoon Chae, Kim &amp; Chang, Seoul, Korea Hiroshi Nemoto, TMI Associates, Tokyo, Japan Scott Schrader, Covington &amp; Burling LLP, Seoul, Korea Suebsiri Taweepon, Tilleke &amp; Gibbins, Thailand</p> <p><i>1.0 CLE Credit in Areas of Professional Practice</i></p>	<p>James J. East, Jr., BakerHostetler LLP, Washington D.C., U.S.A.</p> <p>Jonathan P. Armstrong, Punter Southall Law, UK</p> <p>Sue Young Park, Philip Morris International</p> <p>Bart van der Geest, Hopae, Seoul, Korea</p> <p><i>1.0 CLE Credit in Cybersecurity, Privacy and Data Protection – General</i></p>	<p><b>Chairs</b> Tyler Won, K&amp;L Gates LLP, Seoul, Korea</p> <p><b>Panelists:</b> Olivia Byrne, K&amp;L Gates LLP, Washington D.C., U.S.A.</p> <p>TBD</p> <p><i>1.0 CLE Credit in Areas of Professional Practice</i></p>
--	---	---

11:30 a.m.–1:00 p.m. Lunch | Dining Hall, 6<sup>th</sup> Floor

**1:00 p.m.–3:00 p.m. PLENARY 2 | Big Conference Room, 6<sup>th</sup> Floor**

**Weathering the Storm of IP Litigation and Trade War**  
(Sponsored by *The Law Times*, 법률신문)

This plenary will discuss two important issues Asian companies are encountering in connection with their U.S. business: (1) patent infringement litigation and (2) trade disputes with the U.S. For instance, according to *The Law Times*'s recent review of the dockets of federal courts located in Texas, the number of patent infringement actions brought against Korean major companies for the past 20 years is significantly more than patent infringement actions filed against U.S. big six tech companies. In addition, because of the on-going economic tension between the U.S. and China, many Asian companies are concerned about possible effects of another trade war between the two countries on their U.S. business after the upcoming presidential election in the U.S. In this plenary, two distinguished practitioners will discuss how companies can prepare and respond to these challenges. There will also be roundtable discussion among judges and practitioners on the issues and the panelists as well as the discussion participants will respond to comments and questions from inhouse counsel of Korean major companies.

**Chair and Moderator:**  
Hyun Suk Choi, Choi & Park, LLC, New York, NY, U.S.A.

**Panelists:**  
David Bond, White & Case, LLP, Washington D.C., U.S.A.  
Naveen Modi, Paul Hastings, LLP, Washington D.C., U.S.A.

**Roundtable Discussion Participants:**

	<p>Judge Jennifer Choe-Groves, United States Court of International Trade, New York, NY, U.S.A.          Judge Jiyong Jang, Suwon High Court, Korea          Judge Sallie Kim, U.S. District Court, Northern District of California, U.S.A.          Hojun Yeom, Bae Kim &amp; Lee LLC, Seoul Korea</p> <p><i>2.0 CLE Credits in Areas of Professional Practice</i></p>		
3:00 p.m.–3:30 p.m.	Afternoon Coffee Break   Lobby, 6 <sup>th</sup> Floor		
<b>3:30 p.m.-4:30 p.m.</b>	<b>Panels 22 to 24</b>		
	<b>Track 1</b>	<b>Track 2</b>	<b>Track 3</b>
	<b>PANEL 22   Room 310 (3rd floor)</b>	<b>PANEL 23   Room 615 (6<sup>th</sup> floor)</b>	<b>PANEL 24   Room 613 (6<sup>th</sup> floor)</b>
	<p><b>New Legal Paradigm in the Tax World: Internationalization of Taxation</b></p> <p>Panelists will discuss key developments in the tax landscape, including overviews of the Inflation Reduction Act in the United States and OECD-driven legislative developments. The panelists will also address how the upcoming U.S. election and related politics may impact tax law, particularly against the backdrop of the stalemate in U.S. Congress in passing tax legislation. The panelists will delve into the impact of the foregoing developments on the business world, with particular focus on Korean corporations. Discussions will include recent investment and compliance trends among Korean corporations, facilitation of green energy incentives, and implications of OECD Pillar 2.</p> <p><b>Moderator:</b>          Joonbeom Pae, Mayer Brown, Seoul Korea</p> <p><b>Panelists:</b>          Soo-Jeong Ahn, Yulchon LLC, Seoul, Korea          Ja-Young Lee, Yulchon LLC, Seoul, Korea          Mi Jung Lee, Coupang Corp, Seoul, Korea</p> <p><i>1.0 CLE Credit in Areas of Professional Practice</i></p>	<p><b>Investment in Electric Vehicles Batteries Projects Around the World: Perspectives from Various Countries</b></p> <p>Wind and solar are intermittent sources of power, and when the sun does not shine and the wind does not blow, you need to store electricity, and this is why batteries hold the key to the energy transition.</p> <p>South Korea, Japan, the United States, the European Union and Canada have all tried to spur the development of the battery industry and secure the supply chain: some by attracting foreign direct investments in their own region and some by encouraging their own manufacturers to invest in this sector. Why doing so? How are they doing now? What works and what did not work?</p> <p>Our panelists will tell you how the industry has responded to their governmental initiatives and what the legal considerations and challenges for these companies when investing in the development of the battery industry have been.</p> <p><b>Panelists:</b>          Carlos Ramos-Mrosovsky, BakerHostetler LLP, New York, NY, U.S.A.          Johannes Teichmann, Luther, Germany          Nathan G. Schmidt, Nishimura &amp; Asahi, Japan          Ponora Ang, Fasken Martineau DuMoulin LLP, Montreal, Canada          Suyong Min, Kim &amp; Chang, Seoul, Korea</p>	<p><b>Trends in U.S. and Korean Anti-Corruption Enforcement and Policy Development and the Impact on Global Corporates</b></p> <p>Both the United States and South Korea have signed and ratified the OECD Anti-Bribery Convention and the UN Convention against Corruption. The moderators will guide panelists through a discussion on the respective nations' anti-corruption enforcement efforts, associated policy developments, and the importance of effective compliance programs for multinationals. Key areas of coverage: (1) increased compliance risks—including new US DOJ whistleblowing policies and South Korea's existing system of whistleblower incentives; (2) noteworthy enforcement actions and lessons learned; and (3) voluntary disclosure and safe harbor opportunities for multinationals, including in the M&amp;A context.</p> <p><b>Co-Chairs:</b>          Sandra Moser, Morgan Lewis, Washington, DC, U.S.A.          Wook Jin Rha, Yulchon LLC, Seoul, Korea</p> <p><b>Panelists:</b>          Hanjo Kim, Kim &amp; Chang, Seoul, Korea          Jaehwa Hwang, HD Korea Shipbuilding &amp; Offshore Engineering, Seoul, Korea          Kentaro Toda, TMI Associates, Tokyo, Japan          Kyunghoon Lee, Lee &amp; Ko, Seoul, Korea</p>



	1.0 CLE Credit in Areas of Professional Practice	No MCLE Credit
4:30 p.m.	End of program	
5:30 p.m.-7:30 p.m.	<b>Cocktail Reception   The Griffin at JW Marriott Dongdaemun Square</b> Address: 279, Cheonggyecheon-ro, Jongno-gu, Seoul, South Korea 03198 <b>Hosted by the Seoul Bar Association</b>	
7:30 p.m.-9:30 p.m.	<b>K-Food Walking Tour to Kwangjang Market</b> 88 Changgyeonggung-ro, Jongno District, Seoul, South Korea	

## DAY 3 - FRIDAY, OCTOBER 18, 2024

7:45 a.m.	<b>Bus departing from JW Marriott Dongdaemun Square to Hanyang University</b> <i>(Space is limited to 45 seats. Please see the previous pages for subway instructions.)</i>	
8:30 a.m.–5:00 p.m.	<b>Registration and Exhibits</b>   Lobby, 6 <sup>th</sup> Floor	
8:30 a.m.–9:00 a.m.	Morning Coffee   Lobby, 6 <sup>th</sup> Floor	
9:00 a.m.–10:30 a.m.	<b>PLENARY 3   Big Conference Room, 6<sup>th</sup> Floor</b>  <b>Brave New World: New Frontiers in Regulations of Crypto</b>  It has been said that the world of cryptocurrency is a rapid distillation in less than a decade of lessons learned by the larger financial sector over a century. Unregulated, recent disturbances in the world of crypto – the so-called crypto winter – have drawn attention both to the lack of established norms and have inspired calls for greater regulation. This panel will address recent developments in the world of crypto. A panel of international regulators and others will discuss respective regulatory approaches and explore (1) if and how regulations on the matter can stabilize the market; (2) what those potential regulations might look like; and (3) how the exchanges, intermediaries and other participants can implement anti money laundering (AML) and related procedures to avoid the misuse of the market for illicit activities.  <b>Speakers:</b> Commissioner Hester Peirce, U.S. Securities and Exchange Commission, U.S.A. <i>(virtual appearance)</i> Kyoungeun Ryu, Professor, Korea University School of Law, Seoul, Korea Gemma Lee, Professor, College of International Studies, Kyung Hee University, Gyeonggi-do, Korea  <b>Co-Chairs and Moderators:</b> Howard A. Fischer, Moses & Singer LLP, New York, NY, U.S.A. Hyun Suk Choi, Choi & Park, LLC, New York, NY, U.S.A.  <i>1.5 CLE Credits in Areas of Professional Practice</i>	
10:30 a.m.–10:45 a.m.	Morning Refreshment Break   Lobby, 6 <sup>th</sup> Floor	
10:45 a.m.-11:45 a.m.	<b>Panels 25 to 27</b>	

Track 1	Track 2	Track 3
---------	---------	---------

**PANEL 25 | Room 310 (3rd floor)****Global Trends in Digital Finance Regulation, Commerce, and Law**

As digital finance continues to reshape the global economy, more businesses, policy makers and lawyers are turning to the evolving regulatory, commercial and legal landscape.

This panel brings together a diverse group of esteemed lawyers, in-house and financial regulators counsels based in Hong Kong, Korea, Switzerland, and the USA, to explore the latest trends and challenges in global digital finance. It discusses how digital finance is dealt with globally, how different jurisdictions go about blockchain-based businesses, what rules or the lack thereof are to watch for they either enable or hinder cross-border business, and how that is shaping the future of digital finance.

This panel also explores joint global solutions for harmonizing legal standards in digital finance.

Attendees will get familiar with knowledge and networks needed to navigate the complexities of this fast-evolving field.

**Panelists:**

Howard A. Fisher, Moses & Singer LLP, New York, U.S.A.

Hyobong Kim, Bae, Kim & Lee LLC, Seoul, Korea

Min Seung Kim, Korbit, Seoul, Korea

Peter Wilkinson, BitMEX, Hong Kong

Piotr Caicedo-Wójtowicz, Allegra LAW, Switzerland

*1.0 CLE Credit in Areas of Professional Practice*

**PANEL 26 | Room 615 (6<sup>th</sup> floor)****AI & Copyright: Emerging Laws and Litigation Trends**

This panel will examine the copyrightability of AI-generated works and related litigation, including the use of copyrighted materials in training generative AI. We will explore the layers of the AI technology stack and their IP implications, touch on the fundamentals of copyright law, and review key decisions and active cases. Discussions will include the copyrightability of AI outputs and the rise of class actions against AI providers. The session will conclude with insights on the future of AI and copyright law, and strategies to mitigate legal risks.

**Chair:**

Yar R. Chaikovsky, White & Case LLP, Silicon Valley, CA, U.S.A.

**Panelists:**

Alexander Lee, White & Case LLP, U.S.A.

Judge Jieun Kwon, Seoul Central District Court, Seoul, Korea

Jordan Coyle, White & Case LLP, Washington, DC, U.S.A.

*1.0 CLE Credit in Areas of Professional Practice*

**PANEL 27 | Room 613 (6<sup>th</sup> floor)****Practical Issues of Legal AI: From Legal Eagles to Robo-Gavels**

As AI technology continues to advance, its impact on the legal profession is becoming increasingly profound. This panel will delve into the practical applications of legal AI platforms, exploring how they are currently transforming legal practices and shaping the future of the profession. We will examine the emerging divide between lawyers who effectively utilize AI and those who may be left behind. Additionally, the discussion will address the ethical considerations of integrating AI into legal practice, focusing on how to navigate these changes responsibly while acknowledging their substantial impact.

**Moderator:**

Tony Andriotis, DLA Piper, Tokyo, Japan

**Panelists:**

Dong Eon Cha, DR & AJU LLC, Seoul, Korea

Ja Young Kim, Kakao Enterprise Corp., Seoul, Korea

Miki Fujita, Lisse Law, Japan

Judge Jinsung Kim, Seoul Central District Court, Seoul, Korea

Tae Eon Koo, LIN, Seoul, Korea

Judge Sidney H. Stein, United States District Court, Southern District of New York, U.S.A. (*Discussion Participant*)

*0.5 CLE Credit in Areas of Professional Practice*

*0.5 CLE Credit in Ethics*

11:45 a.m.–12:00 p.m. Networking Coffee Break | Lobby, 6<sup>th</sup> Floor

12:00 p.m.-1:00 p.m. **Panels 28 to 30**

Track 1	Track 2	Track 3
<p><b>PANEL 28   Room 310 (3rd floor)</b></p> <p><b>Crypto Currency on Bankruptcy Law (FTX Case) and Securities Law</b></p> <p>As the cryptocurrency market has developed explosively over the past decade, the legal community has been facing various challenges. As a result of FTX's bankruptcy filing as well as the recent decision on <i>SEC v. Ripple</i>, the legal community now faces various unprecedented legal issues associated with the cryptocurrency market. This panel will examine how U.S. courts recently treated cryptocurrency under the bankruptcy law as well as the securities law and discuss possible effects of the courts' decision on the future crypto currency market. The panel will also discuss how the Korean legal industry has been addressing challenges arising from the rapid developments in the cryptocurrency market.</p> <p><b>Chairs:</b> Hyun Suk Choi, Choi &amp; Park, LLC, New York, NY, U.S.A.  Howard A. Fischer, Moses &amp; Singer LLP, New York, NY, U.S.A.</p> <p><b>Panelists:</b> Brian W. Song, BakerHostetler LLP, New York, NY, U.S.A.  Erin Broderick, Eversheds Sutherland, Chicago and Houston, U.S.A.  Iris H. Park, International Legal Team Leader, Dunamu, Seoul, Korea  Jooheon Lee, Kim &amp; Chang, Seoul, Korea  Kab Lae Kim, Korea Capital Market Institute, Seoul, Korea</p> <p><i>1.0 CLE Credit in Areas of Professional Practice</i></p>	<p><b>PANEL 29   Room 615 (6<sup>th</sup> floor)</b></p> <p><b>Artificial Intelligence Regulation: Current And Future Developments Around the Globe</b></p> <p>This panel will focus on the regulatory approaches to artificial intelligence from different legal perspectives, in line with the theme of the Seoul Global Conference.</p> <p>The panellists will first introduce the current landscape of artificial intelligence regulation and then analyse regulations from different jurisdictions and international organs.</p> <p>Main jurisdictions covered during these discussions will be European Union (EU AI Act), China, Singapore, South Korea and the USA. Furthermore, the speakers will explain the systematic of the Framework Convention on Artificial Intelligence and Human Rights, Democracy and the Rule of Law adopted by the Council of Europe. Information relating to OECD AI Principles, the Hiroshima AI Process, Bletchley Declaration, Seoul Declaration and other international efforts are included in the presentation and the additional materials.</p> <p>Lastly, the audience is welcomed for a discussion on questions that include but are not limited to the impact of regulation on innovation, tasks of legal professionals in the process as well as future harmonization of approaches of different jurisdictions.</p> <p><b>Moderator:</b> Sherry Levin Wallach, The Legal Aid Society of Westchester County, White Plains, NY, U.S.A.</p> <p><b>Panelists:</b> Prof. Ettore Maria Lombardi, Hage-Chahine Law Firm, Beirut, Lebanon  Judge Jisung Kang, Haenam Branch of Gwangju District and Family Court, Jeollanam-do, Korea</p>	<p><b>PANEL 30   Room 613 (6<sup>th</sup> floor)</b></p> <p><b>Navigating Data Privacy in AI-Driven M&amp;A: Legal, Cybersecurity, and Ethical Insights</b></p> <p>This panel explores the pivotal role of data privacy in mergers and acquisitions (M&amp;A) amidst the rise of artificial intelligence (AI) technologies worldwide. As companies increasingly rely on AI for decision-making, understanding the intertwined challenges of data privacy and AI become crucial during M&amp;A transactions. Cybersecurity risks continue to influence corporate valuations, with data breaches potentially jeopardizing deals. The panelists will delve into legal considerations, cybersecurity implications, and the ethical dimensions of data privacy. They will also examine the evolving role of AI in M&amp;A, offering practical strategies to manage data privacy across diverse jurisdictions. This session is essential for stakeholders looking to safeguard corporate interests and reassure stakeholders in the dynamic M&amp;A landscape globally.</p> <p><b>Chair:</b> Alejandro M. Massot, Randle Legal, Argentina</p> <p><b>Panelists:</b> Judge Seo Yoon Lee, Seoul Central District Court, Seoul, Korea  Jonathan P. Armstrong, Punter Southall Law, UK  Tomoyuki Otsuki, Kyndryl, Japan</p> <p><i>0.5 CLE Credit in APP 0.5 CLE Credit in Cybersecurity, Privacy and Data Protection – Ethics</i></p>

	Zeynep Ekinci, Kabine Law Office, Istanbul, Turkey  <i>1.0 CLE Credit in Areas of Professional Practice</i>	
1:00 p.m.–2:30 p.m.	Lunch   Dining Hall, 6 <sup>th</sup> Floor	
2:30 p.m.-3:30 p.m.	<b>Panels 31 to 33</b>	
	<b>Track 1</b>	<b>Track 2</b>
	<b>PANEL 31   Room 310 (3rd floor)</b>	<b>PANEL 32   Room 615 (6<sup>th</sup> floor)</b>
	<b>Report and Recommendations of the NYSBA Task Force on Emerging Digital Finance and Currency</b>	<b>NYSBA’s Groundbreaking Report of the Task Force on Artificial Intelligence – What It Means for the Practice of Law</b>
	The impact of emerging technologies such as digital currencies and assets, blockchain and Web3 on the criminal justice system is vast. While such technologies have introduced new tools to facilitate crime including fraud, money laundering and schemes to defraud, they also provide technology that can be used to improve access to justice, the criminal justice system and the courts. These technologies provide new means for accessing and tracking information about cases and individuals and investigating cases. In introducing the recent report and recommendation of NYSBA’s task force on emerging digital finance and currency, this panel will focus on illegal uses of the technologies and recent developments in crypto fraud by criminal enterprises and then discuss how governments and regulators of both the US and Korea have been responding to the escalating use of blockchain crime to ensure the integrity and security of the digital economy.	In this panel we will hear first-hand on the work of the NYSBA AI Task Force who delivered their comprehensive report on AI in the legal profession in April 2024. We’ll look at the report’s findings and look with an international panel at experts on whether AI will really change the legal profession.
		<b>Panelists:</b> Jonathan P. Armstrong, Punter Southall Law, UK  Tomoyuki Otsuki, Kyndryl, Japan  Judge Jennifer Choe-Groves, United States Court of International Trade, New York, NY, U.S.A.  Judge Seo Yoon Lee, Seoul Central District Court, Seoul, Korea
		<i>1.0 CLE Credit in Areas of Professional Practice</i>
	<b>Chair:</b> Sherry Levin Wallach, The Legal Aid Society of Westchester County, White Plains, NY, U.S.A.	<b>TBD</b>
	<b>Panelists:</b> Felix Ng, Haldanes, Hong Kong	

<p>Meg Strickler, Conaway &amp; Strickler P.C., Atlanta, GA, U.S.A.</p> <p>Judge Seongin Kim, Miryang Branch of Changwon District Court, Gyeongsangnam-do, Korea</p> <p>Yung Sang (YS) Lee, Law Offices of Yung Sang Lee, Seoul, Korea</p> <p>1.0 CLE Credit in _____</p>	
3:30 p.m.	End of program.
	<p><b>Gala Reception and Dinner   Floating Island Convention</b>  Address: Floating Island Convention, 1F Some Sevit, 650, Banpo-dong, Secho-gu, Seoul, Korea  Dress code: Business attire or semi-formal  <i>Note: Registration to this event is separate from the main conference registration fee.</i></p>
6:00 p.m. – 7:00 p.m.	<b>Gala Reception   Villa de Noche, Floating Island Convention   Sponsored by Yulchon LLC</b>
7:00 p.m. – 9:30 p.m.	<b>Gala Dinner   2<sup>nd</sup> Floor, Event Hall, Floating Island Convention   Co-sponsored by Choi &amp; Park, LLC and Kim &amp; Chang</b>

## THINGS TO DO NEAR JW MARRIOTT DONGDAE-MUN SQUARE SEOUL

### #1 Dongdaemun Design Plaza (DDP)



DDP is a multi-cultural complex located at Dongdaemun History & Culture Park Station in Seoul, Korea. Since its foundation on March 21, 2014, DDP has staged diverse cultural events including exhibitions, fashion shows, product launch shows, forums, conferences and various cultural events. DDP is where new design trends begin, and cultures are exchanged. It is a venue that introduces new products and fashion trends, shares knowledge through exhibitions, and that offers diverse contents to experience new

design. Through these activities, DDP will be the hub of the design and fashion industry that will expand to Asia and the world.

- Address: 281 Eulji-ro, Jung District, Seoul
- From JW Marriott Dongdaemun Square Seoul to DDP
  - By Subway: 9 min
    - Takes subway line number 4 at 'Dongdaemun Station'
    - Takes off at 'Dongdaemun History & Culture Park (DDP)' station
  - By Walk: 6 min

## #2 Gwangjang Market



Gwangjang Market, first established in 1905, is known to be the city's oldest and largest traditional markets in Seoul, South Korea. Located in the bustling Jongno district, it's a vibrant hotspot that attracts both locals and tourist alike. Located near to Dongdaemun market, another popular tourist destination, Gwangjang Market is easily accessible and draws crowds eager to indulge in Korea's rich culinary and cultural offerings.

- Address: Gwangjang Market, 88 Changgyeonggung-ro, Jongno District, Seoul
- From JW Marriott Dongdaemun Square Seoul to destination
  - By Subway: 11 min
    - Takes subway line number 1 at 'Dongdaemun Station'
    - Takes off at 'Jongro 5 ga' station
  - By Walk: 12 min

## #3 Pyunghwa Market



Boasting of having 56 years of tradition and history, Pyounghwa (Pyeonghwa) Market is the biggest wholesale clothing market in Korea. The 3-story market is made up of 2,070 shops and stores. On the first floor, visitors can also find several secondhand bookstores. An unusual aspect to take note of is the hours of operation here. Because it's a wholesale market, the main customer base is mostly made up of the merchants inside the market. So that they can display their bought goods the next morning, the market is mainly open during nighttime hours.

- Address: 27 4 Cheonggyecheon-ro, Jung District, Seoul
- 3-minute walk from JW Marriott Dongdaemun Square Seoul

## #4 Cheonggyecheon



Cheonggyecheon Stream (청계천) is one of the top things touted on lists of things to see in Seoul, South Korea. The river which starts near Gwanghwamun Square and eventually ends at the Han River is where the Seoul Lantern Festival is held each year among other popular annual events. Whether it's summer or autumn, if you want to take a walk in downtown Seoul, this is where you should go. 3-minute walk from JW Marriott Dongdaemun Square Seoul to destination

- 3-minute walk from JW Marriott Dongdaemun Square Seoul

## #5 Naksan Fortress Wall Trail



This hiking trail passes Naksan Mountain (124m), the lowest mountain of Seoul's four inner mountains and is a relatively easy trail due to its gentle slope. Naksan is also known as 'Camel Mountain' due to its resemblance to a camel's hump.

- Address: 23-3 Changsin 7-gil, Changsin-dong, Jongno District, Seoul
- 10-minute walk from JW Marriott Dongdaemun Square Seoul (takes 3 min to get to the entrance.)

# 2024 SEOUL GLOBAL CONFERENCE REGISTRATION FORM

October 16-18, 2024 | Hanyang University, Seoul, Korea

Name: \_\_\_\_\_

Company: \_\_\_\_\_

Complete Address: \_\_\_\_\_

Email Address: \_\_\_\_\_ Phone Number: \_\_\_\_\_

Dietary Restrictions (if any): \_\_\_\_\_

Date/Year of Admission to the Bar: \_\_\_\_\_ State/Country of Admission: \_\_\_\_\_

## REGISTRATION FEES IN US DOLLARS

Main Registration*	Full 3-day conference**	DAY 1 only	DAY 2 only	DAY 3 only
NYSBA Member or Seoul Bar Association Member	<input type="checkbox"/> \$ 750	<input type="checkbox"/> \$ 350	<input type="checkbox"/> \$ 350	<input type="checkbox"/> \$ 350
Non-NYSBA member (law firm lawyer)	<input type="checkbox"/> \$ 850	<input type="checkbox"/> \$ 400	<input type="checkbox"/> \$ 400	<input type="checkbox"/> \$ 400
Speaker*** (whether NYSBA or non-NYSBA member)	<input type="checkbox"/> \$ 450	<input type="checkbox"/> \$ 250	<input type="checkbox"/> \$ 250	<input type="checkbox"/> \$ 250
In-house Counsel (whether speaker or not)	<input type="checkbox"/> \$ 400	<input type="checkbox"/> \$ 200	<input type="checkbox"/> \$ 200	<input type="checkbox"/> \$ 200
Young Lawyer (admitted within the past 3 years)	<input type="checkbox"/> \$ 400	<input type="checkbox"/> \$ 200	<input type="checkbox"/> \$ 200	<input type="checkbox"/> \$ 200
Government Official	<input type="checkbox"/> \$ 250	<input type="checkbox"/> \$ 150	<input type="checkbox"/> \$ 150	<input type="checkbox"/> \$ 150
Graduate student, law student, etc. (Must present valid ID)	<input type="checkbox"/> \$ 250	<input type="checkbox"/> \$ 100	<input type="checkbox"/> \$ 100	<input type="checkbox"/> \$ 100

\*Main registration includes 3-day CLE programming, lunch and coffee breaks, Wednesday Welcome Reception, and Thursday Cocktail Reception.

\*\*Tickets for the **Friday Gala Reception and Dinner** are separate from the main registration fee.

\*\*\*Speakers will need to apply a discount code at checkout to get the discounted rate. Email Carra Forgea at [cforgea@nysba.org](mailto:cforgea@nysba.org) to get the code.

### Add-ons for Conference Registrants:

- \$0 Welcome Reception | Hanyang University | Wednesday, October 16, 2024
- \$0 Cocktail Reception | The Griffin at JW Marriott | Thursday, October 17, 2024
- \$100 Gala Reception & Dinner | Floating Island Convention | Friday, October 18, 2024

### Ala Carte Tickets for Guests and Spouses:

- \$80 Welcome Reception | Hanyang University | Wednesday, October 16, 2024
- \$80 Cocktail Reception | The Griffin at JW Marriott | Thursday, October 17, 2024
- \$100 Gala Reception & Dinner | Floating Island Convention | Friday, October 18, 2024

### Cancellation Notice:

Notice of cancellation must be received by **Monday, September 30, 2024** in order to obtain a refund of fees.

### Registration Deadline:

Last day of registration is **Friday, October 11, 2024**. We do NOT accept on-site registrations.

## PAYMENT METHOD

Check or money order enclosed in the amount of

\$ \_\_\_\_\_

Please make checks payable to:

New York State Bar Association  
1 Elk Street, Albany, NY 12207

Note: Checks must be received with the completed form!

Charge \$ \_\_\_\_\_ to:

AMEX  MasterCard  Visa  Discover

Cardholder Name: \_\_\_\_\_

Card number: \_\_\_\_\_

Expiration date: \_\_\_\_\_ CVC: \_\_\_\_\_

\_\_\_\_\_  
Authorized Signature

Wire Transfer/ACH Delivery:

Account Name: New York State Bar Association  
Account Number: 777050803  
Bank Routing No.: 021000021  
SWIFT Code: CHASUS33

General Bank Reference Address:  
JPMorgan Chase  
New York, NY 10017

Special Payment Instructions or Comments: \_\_\_\_\_

## HOW TO REGISTER

**Option 1: Register online by clicking this [registration link](#).**

**Option 2: Fill out this registration form and send it to our secure fax line at (518)-463-5993.**

For questions, reach out to our Member Resource Center (MRC) at [mrc@nysba.org](mailto:mrc@nysba.org) | Phone: 800-582-2452 / 518-463-3724

# CONFERENCE PARTNERS



**사법정책연구원**  
Judicial Policy Research Institute



디지털에셋



Korean American  
Lawyers Association  
of Greater New York

## SPONSORS

### PLATINUM

**KIM & CHANG**



**K&L GATES**

### GOLD

**BAKER BOTTS**

**WHITE & CASE**



**PAUL  
HASTINGS**

### SILVER



**DR&AJU LLC**

**JIPYONG**

**JIPYONG LLC**

**Tilleke  
& Gibbins**

**BakerHostetler**



### BRONZE



**Punter Southall  
Law**

**Morgan  
Lewis**



**Freshfields**

**TSUGUMICHI WATANABE**  
TMI Associates  
Tokyo





NEW YORK STATE BAR ASSOCIATION

**INTERNATIONAL SECTION**

One Elk Street

Albany, NY 12207

518.463.3200/800.582.2452

**NYSBA.ORG**